

ATTENTION
OBSERVE PRECAUTIONS
FOR HANDLING
ELECTROSTATIC
DISCHARGE
SENSITIVE
DEVICES

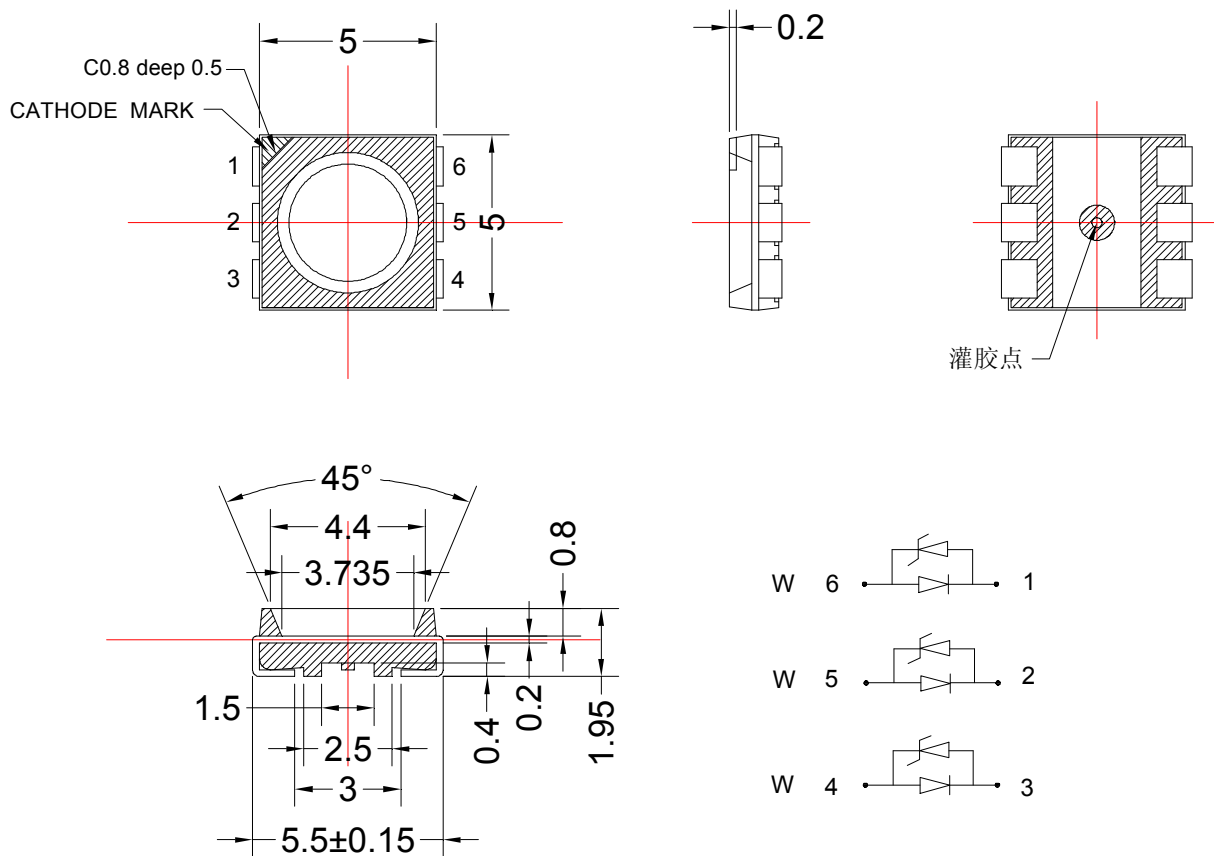
1、Features/特征:

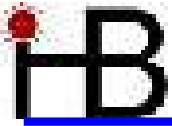
- I Emitting Color/发光颜色: Warm White
- I Lens Type/封装特性: Yellow Diffused/黄色散射
- I Device Outline/外形特征: 5.5×5.0×1.95 (unit:mm)
- I RoHS compliant/符合 RoHS 标准

2、Applications/应用:

- I Backlight for Mobile, Machine Vision, LCD Display/手机、电话、显示屏背光源
- I Backlight in Dashboard and switch of Automive/汽车仪表盘、记程器背光源

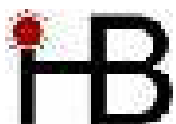
3、Outline Dimensions/产品外形尺寸 (units:mm) :





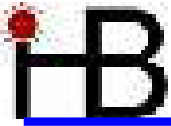
4、Absolute maximum ratings/极限参数 (Ta = 25°C):

| Parameter 参数 | Color 颜色 | Symbol 符号 | Test Condition 测试条件 | Values 数值 | | Unit 单位 |
|---------------------------------|-------------|--------------|------------------------|-----------|------|------------|
| | | | | Min. | Max. | |
| Power Dissipation 损耗功率 | White | Pd | — | — | 95 | mW |
| | White | | | — | 95 | |
| | White | | | — | 95 | |
| Reverse Voltage 反向电压 | White | VR | IR = 30 μ A | 5 | — | V |
| | White | | | | | |
| | White | | | | | |
| Pulse Current 正向峰值电流 | White | Ifp | Duty=0.1, 1kHz | — | 100 | mA |
| | White | | | | | |
| | White | | | | | |
| Forward Current 正向工作电流 | White | Ifm | — | — | 25 | mA |
| | White | | | | | |
| | White | | | | | |
| Operating Temperature 工作温度范围 | White | Topr | — | -40 | +85 | °C |
| | White | | | | | |
| | White | | | | | |
| Storage Temperature 储存温度范围 | White | Tstr | — | -40 | +85 | °C |
| | White | | | | | |
| | White | | | | | |



5、Electrical and optical characteristics/光电参数 (Ta = 25℃):

| Parameter 参数 | Color 颜色 | Symbol 符号 | Test Condition 测试条件 | Values 数值 | | | Unit 单位 |
|------------------------------------|-------------|--------------|------------------------|-----------|------|-----|------------|
| | | | | Min | Typ | Max | |
| Forward Voltage 正向电压 | White | VF | IF = 20mA | — | 3.3 | 3.8 | V |
| | White | | | — | 3.3 | 3.8 | |
| | White | | | — | 3.3 | 3.8 | |
| Reverse Current 反向电流 | White | IR | VR = 5V | — | — | 30 | μ A |
| | White | | | — | — | 30 | |
| | White | | | — | — | 30 | |
| Chromaticity coordinates 色坐标 | White | CIE-X | IF = 60mA | — | — | — | |
| | | CIE-Y | | — | — | — | |
| Luminous Intensity 发光强度 | White | Iv | IF = 20mA | 770 | 1500 | — | mcd |
| | White | | | 770 | 1500 | — | |
| | White | | | 770 | 1500 | — | |
| Luminous Intensity 发光强度 | White | Iv | IF = 60mA | 2130 | 4000 | | mcd |
| Viewing Angle 发光指向角 | White | 2 θ 1/2 | IF = 20mA | — | 120 | — | Deg. |
| | White | | | — | | — | |
| | White | | | — | | — | |



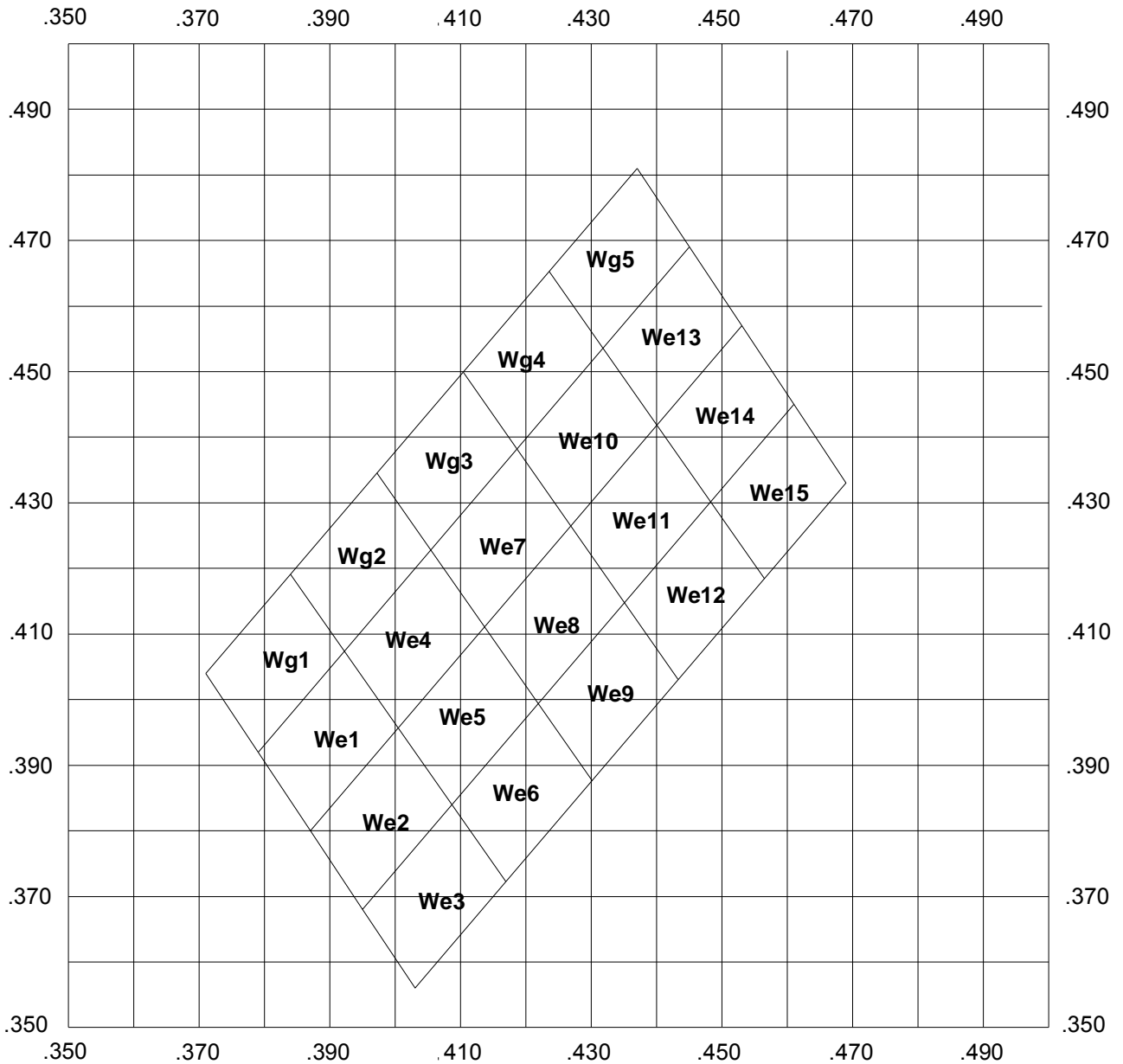
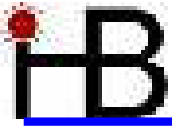
6、Chromaticity coordinates Ranks /色坐标分档:

(Ta=25°C)

色坐标误差: ±0.01。

| 代码 | 轴 | 参数 | | | | 代码 | 轴 | 参数 | | | |
|------|---|-------|-------|-------|-------|------|---|-------|-------|-------|-------|
| We1 | X | 0.387 | 0.379 | 0.392 | 0.400 | We2 | X | 0.400 | 0.409 | 0.395 | 0.387 |
| | Y | 0.380 | 0.392 | 0.407 | 0.396 | | Y | 0.396 | 0.384 | 0.368 | 0.380 |
| We3 | X | 0.403 | 0.395 | 0.409 | 0.417 | We4 | X | 0.400 | 0.392 | 0.405 | 0.414 |
| | Y | 0.356 | 0.368 | 0.384 | 0.372 | | Y | 0.396 | 0.407 | 0.423 | 0.411 |
| We5 | X | 0.414 | 0.422 | 0.409 | 0.400 | We6 | X | 0.417 | 0.409 | 0.422 | 0.430 |
| | Y | 0.411 | 0.399 | 0.384 | 0.396 | | Y | 0.372 | 0.384 | 0.399 | 0.388 |
| We7 | X | 0.414 | 0.405 | 0.419 | 0.427 | We8 | X | 0.427 | 0.435 | 0.422 | 0.414 |
| | Y | 0.411 | 0.423 | 0.438 | 0.426 | | Y | 0.426 | 0.415 | 0.399 | 0.411 |
| We9 | X | 0.430 | 0.422 | 0.435 | 0.443 | We10 | X | 0.427 | 0.419 | 0.432 | 0.440 |
| | Y | 0.388 | 0.399 | 0.415 | 0.403 | | Y | 0.426 | 0.438 | 0.454 | 0.442 |
| We11 | X | 0.440 | 0.448 | 0.435 | 0.427 | We12 | X | 0.443 | 0.435 | 0.448 | 0.457 |
| | Y | 0.442 | 0.430 | 0.415 | 0.426 | | Y | 0.403 | 0.415 | 0.430 | 0.418 |
| We13 | X | 0.440 | 0.432 | 0.445 | 0.453 | We14 | X | 0.453 | 0.461 | 0.448 | 0.440 |
| | Y | 0.442 | 0.454 | 0.469 | 0.457 | | Y | 0.457 | 0.445 | 0.430 | 0.442 |
| We15 | X | 0.457 | 0.448 | 0.461 | 0.469 | Wg1 | X | 0.379 | 0.371 | 0.384 | 0.392 |
| | Y | 0.418 | 0.430 | 0.445 | 0.433 | | Y | 0.392 | 0.404 | 0.419 | 0.407 |
| Wg2 | X | 0.392 | 0.384 | 0.397 | 0.405 | Wg3 | X | 0.405 | 0.397 | 0.410 | 0.419 |
| | Y | 0.407 | 0.419 | 0.435 | 0.423 | | Y | 0.423 | 0.435 | 0.450 | 0.438 |
| Wg4 | X | 0.419 | 0.410 | 0.424 | 0.432 | Wg5 | X | 0.432 | 0.424 | 0.437 | 0.445 |
| | Y | 0.438 | 0.450 | 0.465 | 0.454 | | Y | 0.454 | 0.465 | 0.481 | 0.469 |

Diagram



7、Typical electrical/optical characteristic curves/光电特性曲线:

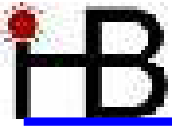


Fig.1 正向电流 Vs. 正向电压

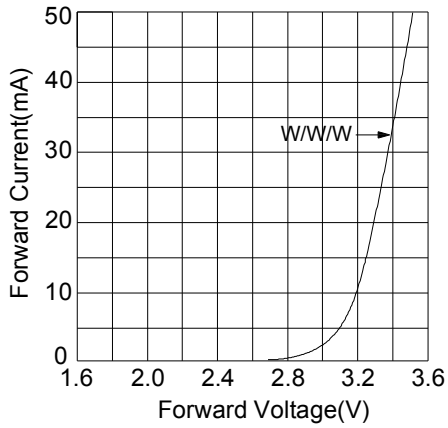


Fig.2 相对亮度 Vs. 正向电流

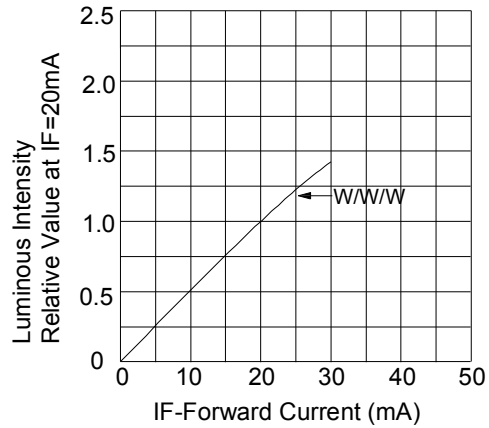


Fig.3 正向电流 Vs. 环境温度

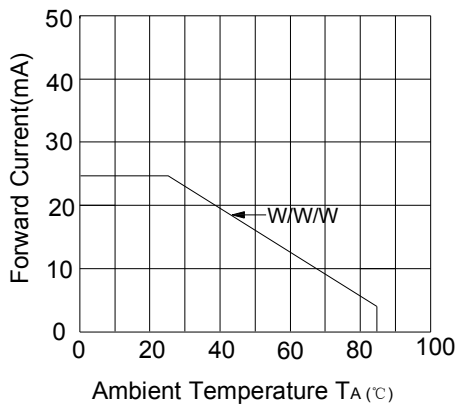


Fig.4 相对亮度 Vs. 环境温度

